



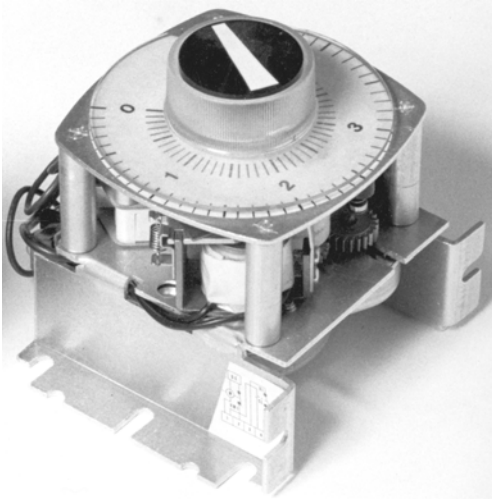
FILE LR28020

RESET TIMERS FOR CHASSIS MOUNT INSTALLATIONS



FILE E47690

SERIES 510



- Timing from 5 seconds to 20 hours
- Interchangeable in field or factory with all known competitive major brands.
- 1 Thru 4 pole timed switches rated 10, 15, or 21 Amperes.
- Open construction.
- All international voltages and frequencies.
- Front panel setting knob with integral progress indicator.
- Optional Indicator Lamp.
- Optional Seal - In switch.
- Fast reset time.

LOAD SWITCHES	DIM "A"	DIM "B"
1 OR 2	3.15	2.50
3 OR 4	4.02	3.37

OPERATION

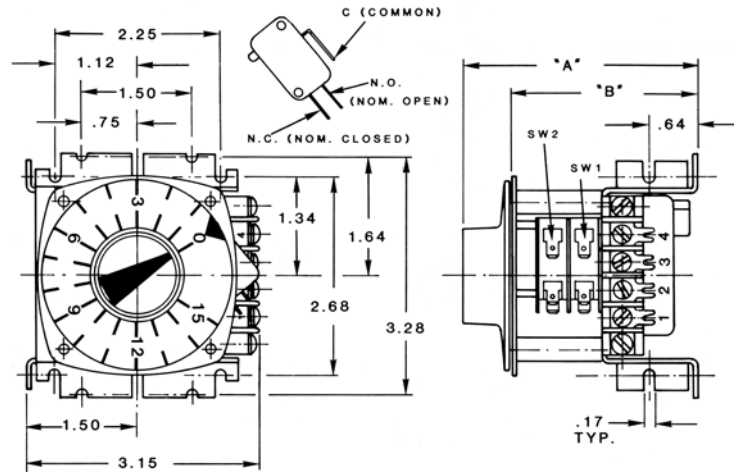
Direct Clutch Model (S) or (M)

With application of input power an electrically actuated clutch engages the output cam shaft. The loads on SW1 and SW2 thru SW4 are actuated. The loads on SW2 thru SW4 will turn off at zero while the load on SW1 will continue to be activated while the cam shaft rotates another 1½°, at which point both the timing motor and the load on SW1 will be turned off. This will allow the timer to be reset either manually or automatically.

HOW TO ORDER: 51 or 52 (N) (W) (SW) (T) (V) (HZ)

SERIES	N = NO. OF POLES	W=SEAL IN SWITCH (Rated 10 Amps)	SW = SWITCH TYPE	T = TIME PER CYCLE	V = AC VOLTS	HZ = HERTZ
51 (Without Indicator Lamp)	1	WITHOUT = S	V1 = 10 AMPS	5, 15, 30, 75, 150 SECONDS	L = 24V	5 = 50 HZ
	2	WITH = M	W2 = 15 AMPS	5, 15, 30, 75, 150 MINUTES	D = 120V	6 = 60 HZ
52 (With Indicator Lamp)	3		H2 = 21 AMPS	5, 10, 15 HOURS	E = 230V	7 = 50-60 HZ
	4					

OUTLINE DRAWING



Reverse Clutch Model (R)

The clutch is normally mechanically engaged. The timing mechanism will operate whenever power is applied to the motor. This will also energize the loads connected to SW1 and SW2 thru SW4. The clutch solenoid coil must have power applied to permit reset. This timer will HOLD at the timed position upon loss of input power and will resume timing when power is restored.

EXAMPLE: 513SV175MD6; Series 510 Chassis Mount Reset Timer, 3PDT Timed Switches, Rated 10 Amp, and 75 Minute Time Per Cycle. Input voltage is 120 Volts, 60Hz.

MADE IN USA

AMERICAN CONTROL PRODUCTS

A DIV. OF PRECISION TIMER CO., INC.
47 WESTBROOK INDUSTRIAL PARK ROAD
WESTBROOK, CT. 06498

PHONE: (860)399-6253

FAX: (860)399-5619

EMAIL: info@precisiontimer.com
WEB SITE: precisiontimer.com

TECHNICAL BULLETIN

CHASSIS MOUNTED RESET TIMERS

PAGE 1
OF 2

DATE
3/17/04

510

REV



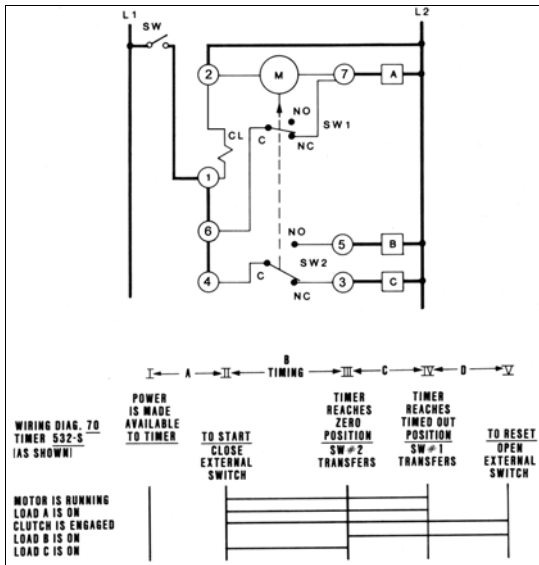
SERIES 530 TYPICAL WIRING DIAGRAMS



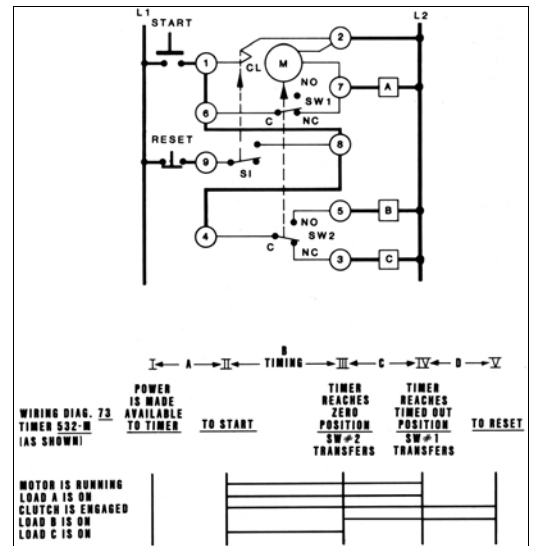
FILE LR28020

FILE E47690

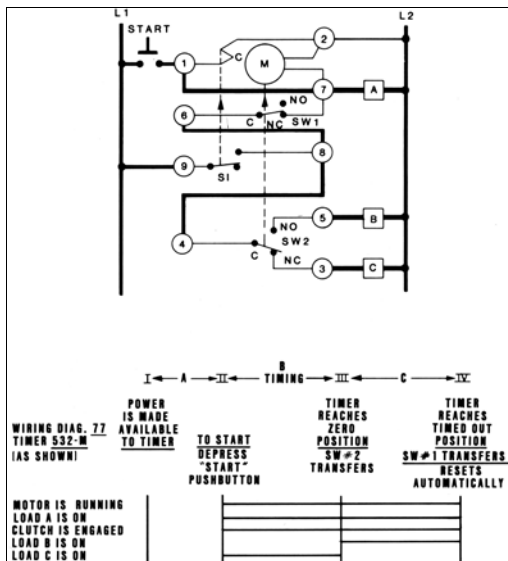
MAINTAINED START - MANUAL SWITCH RESET



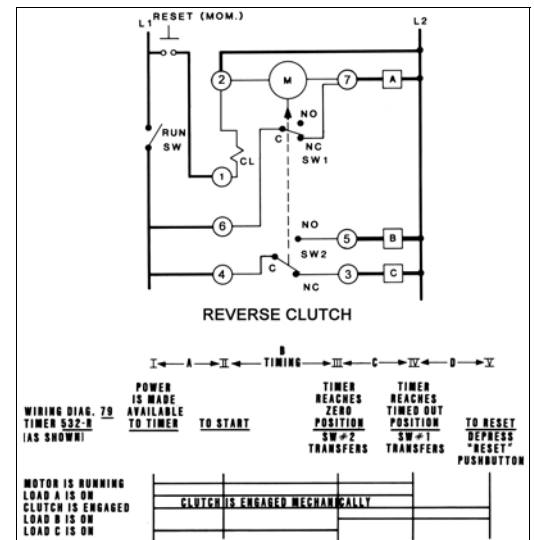
PUSHBUTTON START - PUSHBUTTON RESET



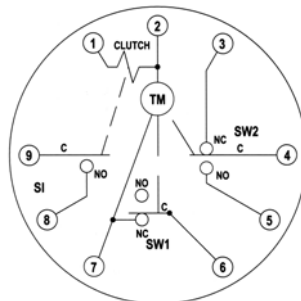
PUSHBUTTON START - AUTOMATIC RESET



REVERSE CLUTCH - MANUAL START PUSHBUTTON RESET



INTERNAL WIRING



FOR SINGLE POLE OUTPUT, TERMINALS 3,4,& 5 ARE BLANK. WHEN S1 SWITCH IS NOT SPECIFIED TERMINALS 8 & 9 ARE BLANK.

MADE IN USA

AMERICAN CONTROL PRODUCTS
A DIV. OF PRECISION TIMER CO., INC.
47 WESTBROOK INDUSTRIAL PARK ROAD
WESTBROOK, CT. 06498

PHONE: (860)399-6253

EMAIL: info@precisiontimer.com
WEB SITE: precisiontimer.com

FAX: (860)399-5619

TECHNICAL BULLETIN

PANEL MOUNTED RESET TIMERS

PAGE 2
OF 2

DATE
3/17/04

530

REV