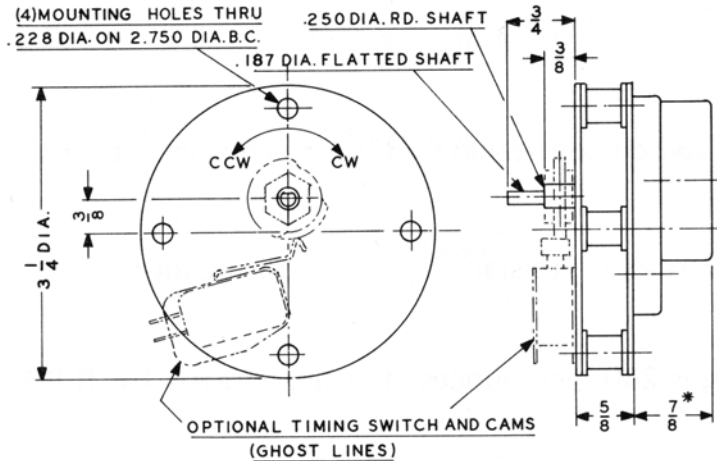
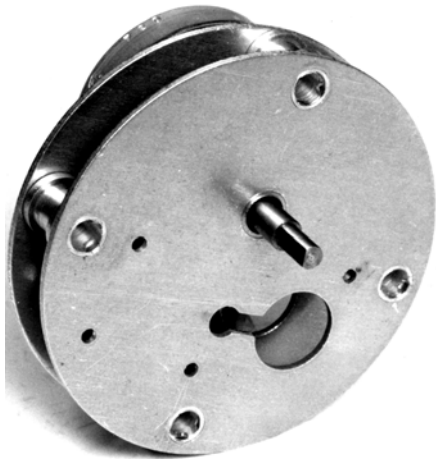


# POWER HEADS

## Synchronous Motor Driven

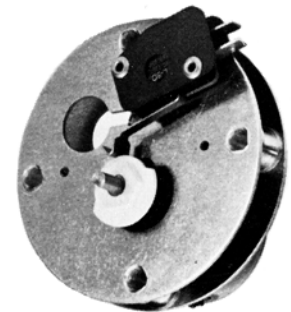
### CHART DRIVE SERIES 020

- 240 In. - Oz. Of torque.
- Suitable for Strip Chart Recorder Drive.
- Available with Switch(s) Rated 10, 15, or 21 Amps.
- UL and CSA Components Used in Construction.
- Available in All international Voltages and Frequencies.



7/8\*  
DIMENSION IS 1 3/16"  
FOR VERY SLOW SPEEDS

STANDARD WITH SHAFT AS  
SHOWN AND CCW ROTATION  
OTHER OPTIONS AVAILABLE



This Power Head unit provides 240 inch - ounces of torque from low output inexpensive synchronous electrical motors. They are a suitable primary drive for strip chart and disc recorders, index tables, and small mechanisms. In addition to being available for a drive only application, they can have an electrical switches and cams on the output shaft that would serve as an output for auto - indexing, time pulses or programming.

#### HOW TO ORDER: 020 - "N" (SW)/OUTPUT SPEED V HZ - SUFFIX

SERIES	NO. OF POLES	SWITCH TYPE	OUTPUT SPEED	VOLTS	HZ	SUFFIX
020	1	V1 (10A)	AS	L = 24V	5 = 50 HZ	FACTORY
	2	W2 (15A)	REQUIRED BY	D = 120V	6 = 60 HZ	ASSIGNED AS
		H2 (21A)	CUSTOMER	E = 230V	7 = 50-60 HZ	REQUIRED

EXAMPLE: 020 - V1/6RPHL5; Series , SPDT Switch, Rated 10Amp, 3 Hour Cycle, 24V, 50Hz

MADE IN USA

#### AMERICAN CONTROL PRODUCTS

A DIV. OF PRECISION TIMER CO., INC.  
47 WESTBROOK INDUSTRIAL PARK ROAD  
WESTBROOK, CT. 06498

PHONE: (860)399-6253

EMAIL: info@precisiontimer.com  
WEB SITE: precisiontimer.com

FAX: (860)399-5619

#### TECHNICAL BULLETIN

#### POWER HEADS

PAGE 1  
OF 2

DATE  
3/22/04

020

REV

# RATINGS AND OPERATIONAL PARAMETERS

## Motors

- Permanent magnet synchronous inductor type.
- USA industrial standard pear-shaped configuration.
- UL and CSA approved.
- Enclosed construction.
- Rated 3 watts @ 120/60 VAC.
- Torque rating 30 inch-ounces at 1 RPM.
- Stocked and standard at 120/60.
- Also readily available or stocked for 24/60, 230/60, 24/50, 115/50, and 220/50.
- These motors operate at a speed precisely synchronous with frequency of input power.
- Special motors available on request, such as reversible, variable speed, extra fast, extra slow, hi-torque, direct current, etc.
- Corrosion resistant.
- Tough, reliable, long-lived.
- Reasonable life expectancy exceeding 10,000 hours.
- Fast acceleration. Instant stop.
- Our staff filters all incoming orders to ensure adequate motor torque.

## Switches (All switches are UL and CSA approved)

### V1 – 10 Amperes

- UL rated 10 amperes nominal @ .75 power factor.
- ½ horsepower at 125/250 VAC.
- Enclosed, snap-action, sub-basic size.
- .187 male push-on terminals.
- Form C – SPDT.

### W2 – 15 Amperes

- UL rated 15 amperes nominal @ .75 power factor.
- ½ horsepower at 125/250 VAC.
- Enclosed, snap-action, sub-basic size.
- .250 Male push-on terminals.
- Form C – SPDT.

### H2 – 21 Amperes (UL only)

- UL rated 21 amperes nominal @250VAC.
- 1hp @ 125 VAC, 2hp @ 250VAC.
- Enclosed, snap-action, sub-basic size.
- .250 male push-on terminals.

## Life Expectancy

The life of a switch is a function of the type, magnitude, and number of usages under an applied electrical load. At low electrical load 95% survival is expected at 10,000,000 operations, at full electrical load 95% survival is expected at 150,000 operations, subject to inrush considerations and type of load as to resistive, inductive, or capacitive. Particular attention should be given for high inrush applications such as heaters or lamps as might weld, erode, or cavitate switch contacts. We will gladly assist customers in making a selection.

Camshaft Speed (Time per Cycle)	No. of Switch Operations in One Year	
	Continuous Operation	Fifty 40-hour Weeks
1 sec.	31,557,600	7,200,000
15 sec.	2,103,840	480,000
30 sec.	1,051,920	240,000
1 min.	525,960	120,000
15 min.	35,064	8,000
30 min.	17,532	4,000
1 hr.	8,766	2,000
15 hrs.	584	133
30 hrs.	292	67

MADE IN USA

## AMERICAN CONTROL PRODUCTS

A DIV. OF PRECISION TIMER CO., INC.  
47 WESTBROOK INDUSTRIAL PARK ROAD  
WESTBROOK, CT. 06498

PHONE: (860)399-6253

FAX: (860)399-5619

EMAIL: info@precisiontimer.com  
WEB SITE: www.precisiontimer.com

## TECHNICAL BULLETIN

### POWER HEADS

PAGE 2  
OF 2

DATE  
3/22/04

020

REV