



TIMING MODULE

FULLY SOLID STATE ENCAPSULATED PC MOUNTING

0.5 AMPERE LOAD RATING

Series 6C1 - ON DELAY

CMOS DIGITAL CIRCUITRY



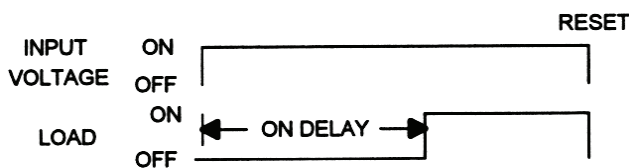
E75633

- Life Expectancy –unlimited
- Environment Protected
- Tamper Proof
- No False Operate

A solid state switch turns the load ON at the end of a timed period and it remains in this condition until power is removed. Power must be applied continuously during the timing period and for as long as the load is to be energized. Removal or interruption of power at any time will cause the timer to reset. The next cycle can then be initiated by application of power.

Control the timing of valves, relays, magnetic line starters, and solenoids rated less than 0.5 ampere (5 amp inrush). CMOS digital circuitry, with solid state output switching. P/C boards and components are encapsulated in a flame retardant epoxy compound. The wires can be used as pig tails or trimmed to be inserted into a p/c board. Available in all standard voltages and frequencies. Fixed or adjustable timing from .2 to 300 Seconds.

TIMING DIAGRAM



SPECIFICATIONS

1. Repeat Accuracy: $\pm 0.25\%$
2. Combined Effect of Temperature and Voltage upon Repeat Accuracy: $\pm 2\%$
3. Reset Time: 16 ms.
4. Operating Voltage Tolerance: $\pm 20\%$
5. Load Current: Steady State – 8 ma. Min., 0.5A Max.
- 6 Voltage Drop: 1.5V Typical at 100 milliamp
7. Leakage Current: 5 ma.
8. Dielectric Strength: 1500 VRMS
9. Insulation Resistance: 100 Megohms Min.
10. Input Transient Protected
11. Temperature Ambients: Operating -40°C to +70°C Storage -55°C to +70°C
12. Humidity-Operating: 95% Relative
13. Timing Tolerance: $\pm 9\%$ + Tolerance of Rt Std., $\pm 5\%$ Special (Fixed)
14. DC Polarity insensitive

HOW TO ORDER 6C1 – (V) (H) (T)

SERIES	(V)=VOLTAGE	H = HOOK UP	(T) = TIME
6C1	1 = 12VDC	P = PINS FOR PC MOUNT L = LEADS (#22 AWG x 6" LONG)	.2-300 SECONDS SPECIFY FIXED TIME IN SECONDS
	2 = 24VDC		
	3 = 48VDC		
	4 = 24VAC		
	5 = 120VAC		
	6 = 240VAC		
	7 = 110VDC		

EXAMPLE P/N: 6C1-2P160- This is an ON DELAY 0.5A Rated Solid State Timer with a fixed 160 second DELAY and an INPUT VOLTAGE of 24 VDC and P/C mount construction.

MADE IN USA

AMERICAN CONTROL PRODUCTS

A DIV. OF PRECISION TIMER CO., INC.
47 WESTBROOK INDUSTRIAL PARK ROAD
WESTBROOK, CT. 06498

PHONE: (860)399-6253
EMAIL: info@precisiontimer.com

FAX:(860)399-5619
Web Site: precisiontimer.com

TECHNICAL BULLETIN

SOLID STATE TIMING MODULE

PAGE 1
OF 2

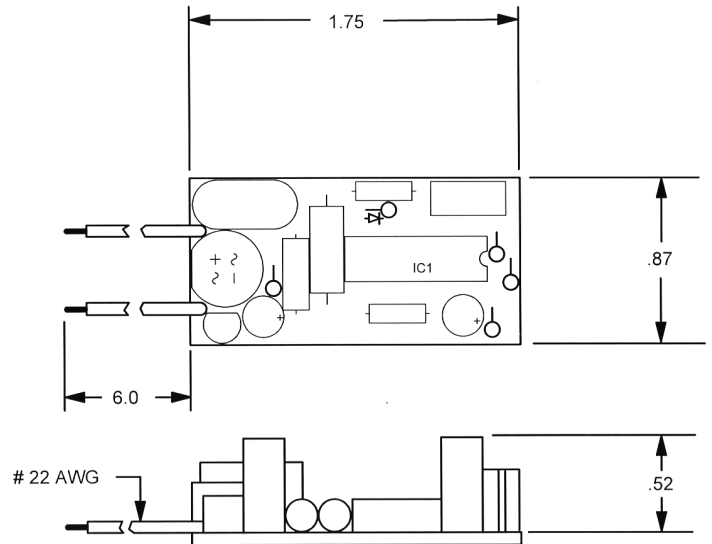
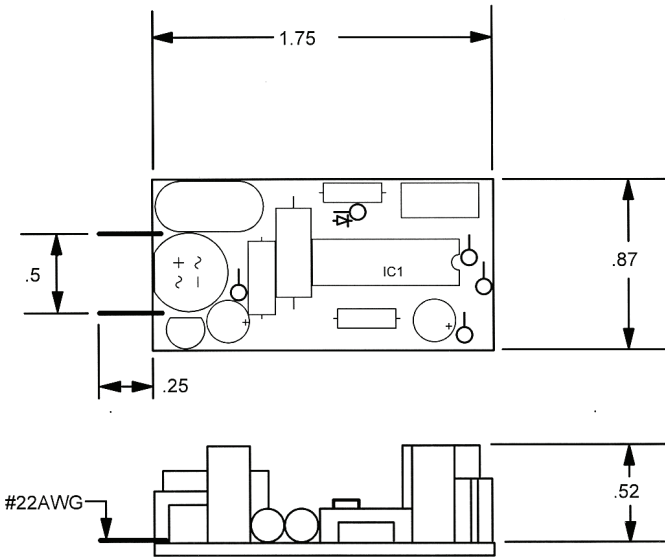
DATE
7-25-11

6C1

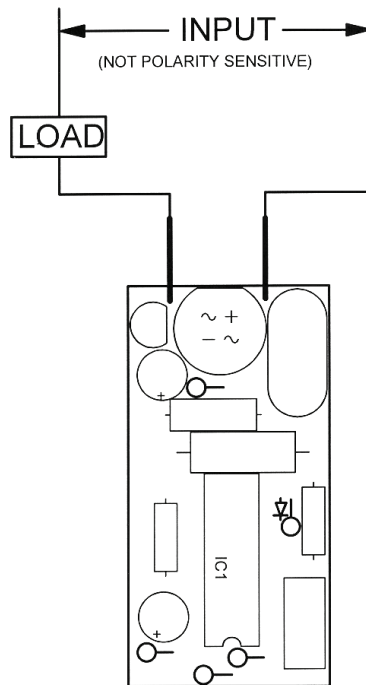
REV
A

OPTION P: PINS FOR P/C MOUNT

OPTION L: WIRE LEADS



TYPICAL WIRING



MADE IN USA

AMERICAN CONTROL PRODUCTS

A DIV. OF PRECISION TIMER CO., INC.
47 WESTBROOK INDUSTRIAL PARK ROAD
WESTBROOK, CT. 06498

PHONE: (860)399-6253
EMAIL: info@precisiontimer.com

FAX: (860)399-5619
Web Site: precisiontimer.com

TECHNICAL BULLETIN

SOLID STATE TIMING MODULE

PAGE 2
OF 2

DATE
7-25-11

6C1

REV
A