

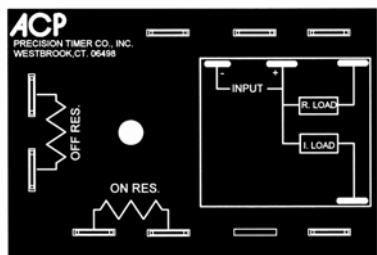
DUAL OUTPUT TIMING MODULE

FULLY SOLID STATE

ENCAPSULATED

ONE AMPERE LOAD RATING

Series 6063 - PROGRAMMABLE RECYCLE WITH INTERVAL
CMOS DIGITAL CIRCUITRY

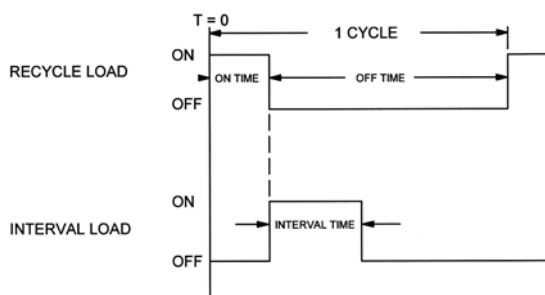


- Life Expectancy –unlimited
- Environment Protected
- Tamper Proof
- No False Operate
- Small Size – 2"x 3" x 1.35"
- Lightweight – approximately 2.5 oz.
- Rugged
- Transient Protected to 6000V

Application of power simultaneously initiates timing and turns the recycle load ON. The recycle load remains ON for the preset ON time period after which it turns OFF and the interval load turns ON for the fixed time period and turns OFF. The interval time is reset when the next recycle ON time occurs. The ON/OFF cycling with interval continues until power is removed. The interval time should not exceed the minimum preset OFF time. Removal of power at any point in the cycle will cause the timer to reset to T = To.

Control the timing of valves, SFHP motors, lamps, relays, magnetic line starters, and actuators rated less than 1 ampere (10 amps inrush). CMOS digital circuitry, with solid state output switching. P/C boards and internal components are encapsulated in a flame retardant molded housing, fitted with quick connect wiring terminals. Available in all standard voltages and frequencies. Fixed or adjustable timing from .1 seconds to 24 hours.

TIMING DIAGRAM



SPECIFICATIONS

1. Repeat Accuracy: $\pm 0.1\%$ or 16 ms. Whichever is greater
2. Combined Effect of Temperature and Voltage upon Repeat Accuracy: 1%
3. Reset Time: 150 ms.
4. Operating Voltage Tolerance: $\pm 20\%$
5. Load Current: Steady State – 8 ma. Min., 1 Ampere Max., 10 A Inrush
- 6 Voltage Drop: 1.5V Typical at 1 Ampere
7. Leakage Current: 5 ma.
8. Dielectric Strength: 1500 VRMS
9. Insulation Resistance: 100 Megohms Min.
10. Input Transient Protection: 3000V 120V UNITS, 6000V 240V units
11. Temperature Ambients: Operating -40°C to +70°C, Storage -55°C to +70°C
12. Humidity-Operating: 95% Relative
13. Linearity (Option A or D): $\pm 5\%$ Minimum from 10% to 90% of range
14. Timing Tolerance: $\pm 9\%$ + Tolerance of Rt Std., $\pm 5\%$ Special (Fixed)

HOW TO ORDER 6063 – (T1) (T2) (V) (P1) (P2) / (T3)

SERIE	(T1) = ON TIME	(T2) = OFF TIME	(T3) = INTERVAL	(V)=VOLTAGE	OPTIONS (P1) = ON TIME, (P2) = OFF TIME
6063	P = .1 - 5 SEC.	P = .1 - 5 SEC.	FIXED TIME SPECIFY VALUE IN SECONDS OR MINUTES 1 SECOND TO 120 MINUTES	1 = 12VDC	O - CUSTOMER SUPPLIES OWN POTENTIOMETER OR RESISTOR A - POTENTIOMETER SUPPLIED AS LOOSE PART *B - EXTERNALLY INSTALLED RESISTOR *C - FACTORY FIXED INTERNAL D - TRIMMER POTENTIOMETER INSTALLED ON TERMINALS R - INTERNAL POTENTIOMETER WITH THRU SHAFT S - INTERNAL POTENTIOMETER WITH SCREWDRIVER SLOT
	1 = .1 - 10 SEC.	1 = .1 - 10 SEC.		2 = 24VDC	
	L = .2 - 20 SEC.	L = .2 - 20 SEC.		3 = 48VDC	
	J = .3 - 30 SEC.	J = .3 - 30 SEC.		4 = 24VAC	
	M = .6 - 60 SEC.	M = .6 - 60 SEC.		5 = 120VAC	
	2 = 1 - 100 SEC.	2 = 1 - 100 SEC.		6 = 240VAC	
	K = 1.2 - 120 SEC.	K = 1.2 - 120 SEC.			
	F = 2 - 180 SEC.	F = 2 - 180 SEC.			
	E = 3 - 300 SEC.	E = 3 - 300 SEC.			
	3 = 10 - 1000 SEC.	3 = 10 - 1000 SEC.			
	4 = 0.1 - 10 MIN.	4 = 0.1 - 10 MIN.			
	G = 0.3 - 30 MIN.	G = 0.3 - 30 MIN.			
	H = 0.6 - 60 MIN.	H = 0.6 - 60 MIN.			
5 = 1 - 100 MIN.	5 = 1 - 100 MIN.				
V = 3 - 300 MIN.	V = 3 - 300 MIN.				
6 = 10 - 1000 MIN.	6 = 10 - 1000 MIN.				
D = 1 - 24 HRS.	D = 1 - 24 HRS.				

** FOR FIXED TIME SPECIFY THE VALUE IN SECONDS, MINUTES, OR HOURS*

MADE IN USA

EXAMPLE P/N: 6063-32500/240S This is an PROGRAMMABLE RECYCLE WITH INTERVAL 1A Rated Solid State Timer with a 10-1000 second ADJUSTABLE ON TIME and a 10-100 second OFF TIME. The INTERVAL time is 240 seconds. The INPUT VOLTAGE of 120 VAC. The customer will supply the ON & OFF TIME adjust potentiometers or resistors.

AMERICAN CONTROL PRODUCTS

A DIV. OF PRECISION TIMER CO., INC.
47 WESTBROOK INDUSTRIAL PARK ROAD
WESTBROOK, CT. 06498

PHONE: (860)399-6253
EMAIL: info@precisiontimer.com

FAX: (860)399-5619
Web Site: precisiontimer.com

TECHNICAL BULLETIN

SOLID STATE TIMING MODULE

PAGE 1
OF 2

DATE
8-1-01

6063

REV
B

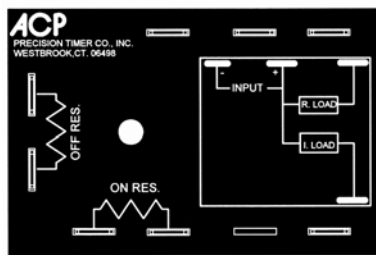
DUAL OUTPUT TIMING MODULE

FULLY SOLID STATE

ENCAPSULATED

ONE AMPERE LOAD RATING

Series 6063 - PROGRAMMABLE RECYCLE WITH INTERVAL
CMOS DIGITAL CIRCUITRY

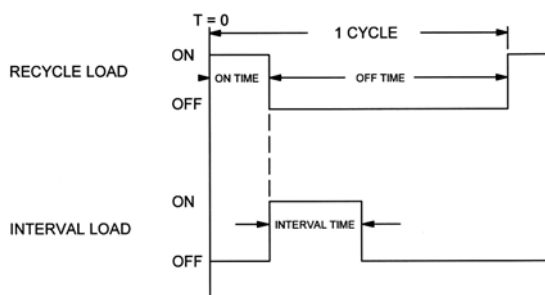


- Life Expectancy –unlimited
- Environment Protected
- Tamper Proof
- No False Operate
- Small Size – 2"x 3" x 1.35"
- Lightweight – approximately 2.5 oz.
- Rugged

Application of power simultaneously initiates timing and turns the recycle load ON. The recycle load remains ON for the preset ON time period after which it turns OFF and the interval load turns ON for the fixed time period and turns OFF. The interval time is reset when the next recycle ON time occurs. The ON/OFF cycling with interval continues until power is removed. The interval time should not exceed the minimum preset OFF time. Removal of power at any point in the cycle will cause the timer to reset to T = To.

Control the timing of valves, SFHP motors, lamps, relays, magnetic line starters, and actuators rated less than 1 ampere (10 amps inrush). CMOS digital circuitry, with solid state output switching. P/C boards and internal components are encapsulated in a flame retardant molded housing, fitted with quick connect wiring terminals. Available in all standard voltages and frequencies. Fixed or adjustable timing from .1 seconds to 24 hours.

TIMING DIAGRAM



SPECIFICATIONS

1. Repeat Accuracy: $\pm 0.1\%$ or 16 ms. Whichever is greater
2. Combined Effect of Temperature and Voltage upon Repeat Accuracy: 1%
3. Reset Time: 150 ms.
4. Operating Voltage Tolerance: $\pm 20\%$
5. Load Current: Steady State – 8 ma. Min., 1 Ampere Max., 10 A Inrush
6. Voltage Drop: 1.5V Typical at 1 Ampere
7. Leakage Current: 5 ma.
8. Dielectric Strength: 1500 VRMS
9. Insulation Resistance: 100 Megohms Min.
10. Input Transient Protection: 3000V 120V UNITS, 6000V 240V units
11. Temperature Ambients: Operating -40°C to +70°C, Storage -55°C to +70°C
12. Humidity-Operating: 95% Relative
13. Linearity (Option A or D): $\pm 5\%$ Minimum from 10% to 90% of range
14. Timing Tolerance: $\pm 9\%$ + Tolerance of Rt Std., $\pm 5\%$ Special (Fixed)

HOW TO ORDER 6063 – (T1) (T2) (V) (P1) (P2) / (T3)

SERIE	(T1) = ON TIME	(T2) = OFF TIME	(T3) = INTERVAL	(V)=VOLTAGE	OPTIONS (P1) = ON TIME, (P2) = OFF TIME
6063	P = .1 - 5 SEC.	P = .1 - 5 SEC.	FIXED TIME SPECIFY VALUE IN SECONDS OR MINUTES 1 SECOND TO 120 MINUTES	1 = 12VDC	O - CUSTOMER SUPPLIES OWN POTENTIOMETER OR RESISTOR A - POTENTIOMETER SUPPLIED AS LOOSE PART *B - EXTERNALLY INSTALLED RESISTOR *C - FACTORY FIXED INTERNAL D - TRIMMER POTENTIOMETER INSTALLED ON TERMINALS R - INTERNAL POTENTIOMETER WITH THRU SHAFT S - INTERNAL POTENTIOMETER WITH SCREWDRIVER SLOT
	1 = .1 - 10 SEC.	1 = .1 - 10 SEC.		2 = 24VDC	
	L = .2 - 20 SEC.	L = .2 - 20 SEC.		3 = 48VDC	
	J = .3 - 30 SEC.	J = .3 - 30 SEC.		4 = 24VAC	
	M = .6 - 60 SEC.	M = .6 - 60 SEC.		5 = 120VAC	
	2 = 1 - 100 SEC.	2 = 1 - 100 SEC.		6 = 240VAC	
	K = 1.2 - 120 SEC.	K = 1.2 - 120 SEC.			
	F = 2 - 180 SEC.	F = 2 - 180 SEC.			
	E = 3 - 300 SEC.	E = 3 - 300 SEC.			
	3 = 10 - 1000 SEC.	3 = 10 - 1000 SEC.			
	4 = 0.1 - 10 MIN.	4 = 0.1 - 10 MIN.			
	G = 0.3 - 30 MIN.	G = 0.3 - 30 MIN.			
	H = 0.6 - 60 MIN.	H = 0.6 - 60 MIN.			
5 = 1 - 100 MIN.	5 = 1 - 100 MIN.				
V = 3 - 300 MIN.	V = 3 - 300 MIN.				
6 = 10 - 1000 MIN.	6 = 10 - 1000 MIN.				
D = 1 - 24 HRS.	D = 1 - 24 HRS.				

MADE IN USA

EXAMPLE P/N: 6063-32500/240S This is an PROGRAMMABLE RECYCLE WITH INTERVAL 1A Rated Solid State Timer with a 10-1000 second ADJUSTABLE ON TIME and a 10-100 second OFF TIME. The INTERVAL time is 240 seconds. The INPUT VOLTAGE of 120 VAC. The customer will supply the ON & OFF TIME adjust potentiometers or resistors.

AMERICAN CONTROL PRODUCTS

A DIV. OF PRECISION TIMER CO., INC.
47 WESTBROOK INDUSTRIAL PARK ROAD
WESTBROOK, CT. 06498

PHONE: (860)399-6253
EMAIL: info@precisiontimer.com

FAX: (860)399-5619
Web Site: precisiontimer.com

TECHNICAL BULLETIN

SOLID STATE TIMING MODULE

PAGE 1
OF 2

DATE
8-1-01

6063

REV
B