



FILE LR28020

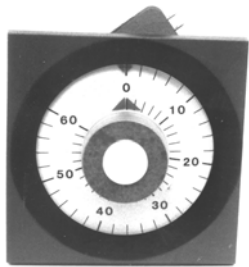
# ADJUSTABLE PUSHBUTTON TIMERS FOR PANEL MOUNT INSTALLATIONS



FILE E47690

## SERIES DPB

Hand Set Dial Adjusts The Time Interval Which Is Started By The Pushbutton. The Dial Remains Stationary During Timing And Retains The Setting



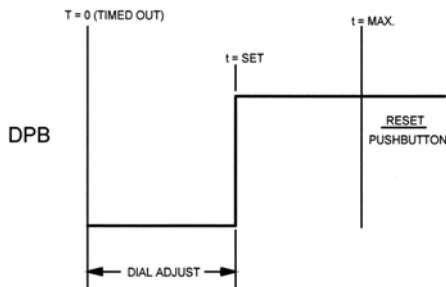
AVAILABLE WITH HIGH- STYLED BLACK PLASTIC FRONT END

- Choice among several standard front - panel styling and installation arrangements.
- Interchangeable in field or factory with all known competitive major brands.
- 1 and 2 pole.
- Switches rated at 10,15 or 21 amperes with .187" or .250" male push-on termination.
- Broad selection of pushbutton time ranges.
- All international voltages and frequencies.
- Dial remains "as set" for repeat use.

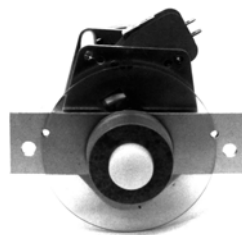
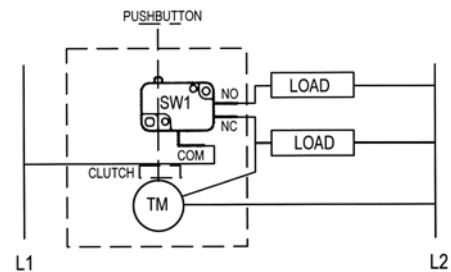


AVAILABLE WITH ALUMINUM DIAL AND BEZEL ECONOMY FRONT END

TIMING DIAGRAM (TYPICAL)



WIRING DIAGRAM (TYPICAL)



AVAILABLE WITHOUT A DIAL

**OPERATION** Load switch (Form C) is transferred when pushbutton is depressed, and remains transferred until mechanism "times down" at the end of the pre - established time setting. Resets on next usage.

**APPLICATIONS** Battery chargers, fast food machinery, laboratory equipment, night lights, automation.

**HOW TO ORDER:** DPB (N) (SW) / (T) (V) (HZ) (O) (S)

SERIES	N = NO. OF POLES	SW = SWITCH TYPE	T = PUSHBUTTON TIME RANGE	V = AC VOLTS	HZ = HERTZ	O = OPTIONS	S = SUFFIX
DPB	1	V1	AS	L = 24V	5 = 50 HZ	CONSTRUCTION	FACTORY
	2	W2	REQUIRED BY	D = 120V	6 = 60 HZ	OR DIAL	ASSIGNED
		H2	CUSTOMER	E = 230V	7 = 50-60 HZ	SEE	AS REQUIRED
			SELECT FROM 15 SEC. TO 4 DAYS			OUTLINE DRAWINGS	

**EXAMPLE:** DPBW2/24HD5S; Series DPB Pushbutton Timer, SPDT Switch, Rated 15 Amp, 24 Hour Maximum Time Setting, 120 Volts, 50Hz, High Styled Front End Mounts from Panel Front.

MADE IN USA

AMERICAN CONTROL PRODUCTS  
A DIV. OF PRECISION TIMER CO., INC.  
47 WESTBROOK INDUSTRIAL PARK ROAD  
WESTBROOK, CT. 06498

PHONE: (860)399-6253

EMAIL: info@precisiontimer.com  
WEB SITE: precisiontimer.com

FAX: (860)399-5619

TECHNICAL BULLETIN

PANEL MOUNTED PUSHBUTTON TIMERS

PAGE 1  
OF 4

DATE  
5/27/03

DPB

REV

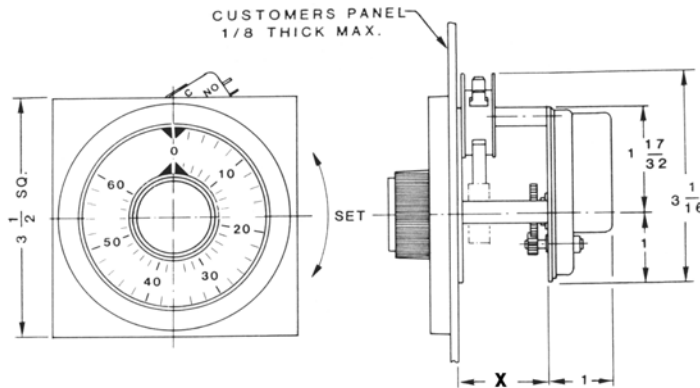


# SERIES DPB OUTLINE DRAWINGS



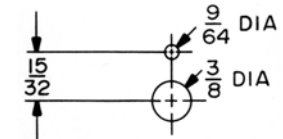
FILE LR28020

## INSTALLATION ARRANGEMENT "R"



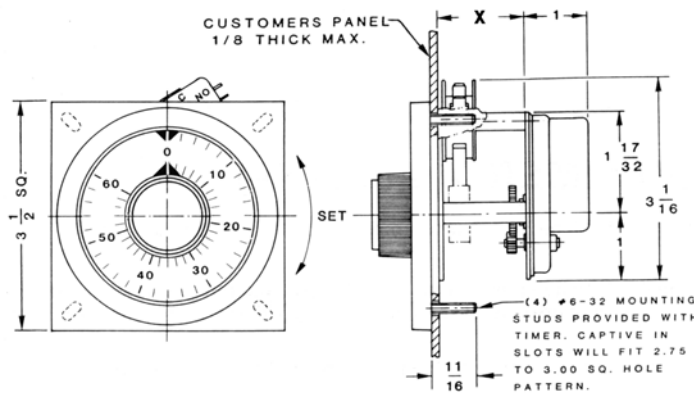
HANDSOME PANEL STYLING FEATURING A BLACK PLASTIC BEZEL WITH CONTRASTING DIAL

REASONABLY PRICED  
INEXPENSIVE TO INSTALL FROM REAR OF PANEL



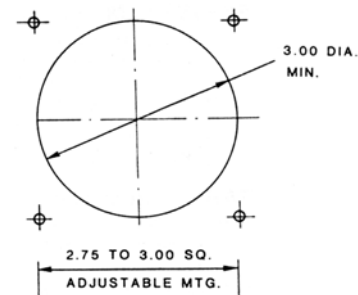
MOUNTING DIMENSIONS

## INSTALLATION ARRANGEMENT "S"



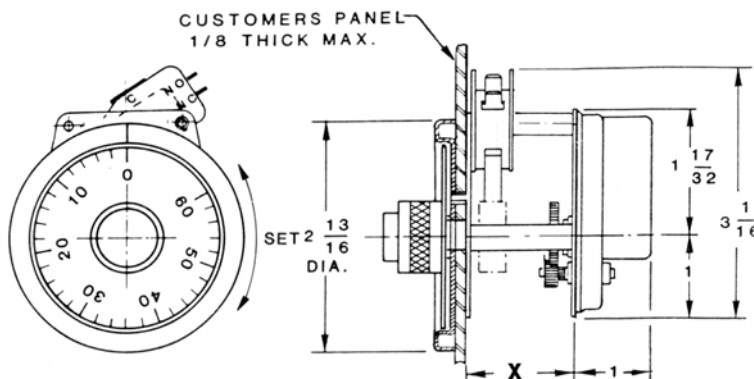
FEATURES A BLACK PLASTIC BEZEL WITH CONTRASTING DIAL AND 4 ADJUSTABLE STUDS

MOUNTING IS FROM THE FRONT OF THE PANEL

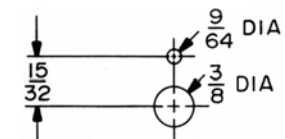


This installation arrangement "S" is interchangeable with many competitive brands. Four # 6-32 studs are provided, captive in slots, and they will adjust freely to match any square pattern from 2.75" square to 3.00" square. The plastic front bezel will cover and hide any existing central body clearance hole up to 3 1/2" diameter.

## INSTALLATION ARRANGEMENT "A"



LOW COST ALUMINUM DIAL AND BEZEL FRONT END  
VERY INEXPENSIVE TO INSTALL FROM REAR OF PANEL



MOUNTING DIMENSIONS

MADE IN USA

**AMERICAN CONTROL PRODUCTS**  
A DIV. OF PRECISION TIMER CO., INC.  
47 WESTBROOK INDUSTRIAL PARK ROAD  
WESTBROOK, CT. 06498

PHONE: (860)399-6253

FAX: (860)399-5619

EMAIL: info@precisiontimer.com  
WEB SITE: precisiontimer.com

## TECHNICAL BULLETIN

### PANEL MOUNTED INTERVAL TIMERS

PAGE 2  
OF 4

DATE  
5/27/03

**DPB**

REV



FILE LR28020

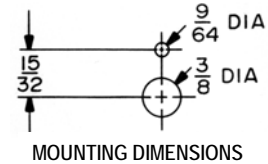
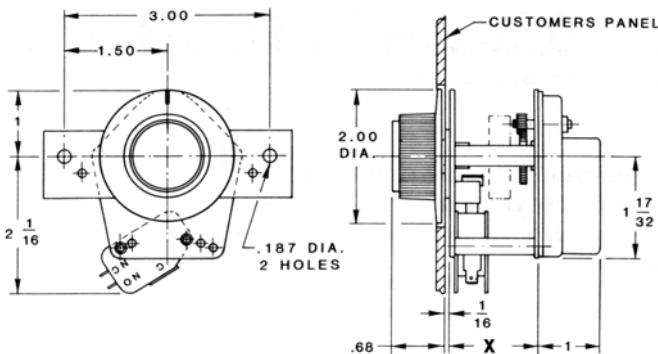
# SERIES DPB OUTLINE DRAWINGS



FILE E47690

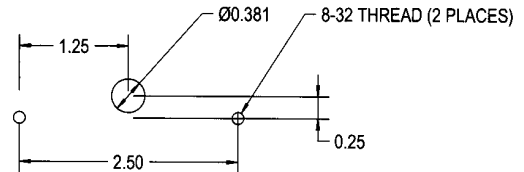
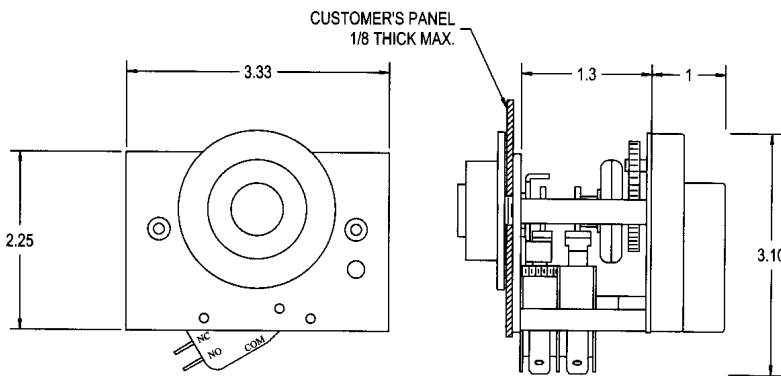
## INSTALLATION ARRANGEMENT "B"

BARE TIMER WITHOUT A DIAL AND BEZEL  
CUSTOMER WILL PROVIDE THE FRONT END DECOR



## INSTALLATION ARRANGEMENT "BD"

BARE TIMER  
ADAPTS TO 2-SCREW MOUNTING PATTERN OF  
OF A MAJOR BRAND



## INSTALLATION ARRANGEMENT "X"

**ANY OTHER MOUNTING ARRANGEMENT**  
We can provide numerous other mounting arrangements and front-end designs. Please ask the factory about any special arrangement needed but not illustrated above.

Number of Poles	Depth - Inches Dimension "X"
1	.8
2	1.3

MADE IN USA

**AMERICAN CONTROL PRODUCTS**  
A DIV. OF PRECISION TIMER CO., INC.  
47 WESTBROOK INDUSTRIAL PARK ROAD  
WESTBROOK, CT. 06498

PHONE: (860)399-6253

FAX: (860)399-5619

EMAIL: info@precisiontimer.com  
WEB SITE: precisiontimer.com

TECHNICAL BULLETIN

PANEL MOUNTED INTERVAL TIMERS

PAGE 3  
OF 4

DATE  
5/27/03

**DPB**

REV



# RATINGS AND OPERATIONAL PARAMETERS

## MOTORS

- Permanent magnet synchronous inductor type.
- USA industrial standard pear-shaped configuration.
- UL and CSA approved.
- Enclosed construction.
- Torque rating 30 inch-ounces at 1 RPM.
- Stocked and standard at 120/60.
- Also readily available or stocked for 24/60, 230/60, 24/50, 115/50, and 220/50.
- These motors operate at a speed precisely synchronous with frequency of input power.
- Corrosion resistant.
- Tough, reliable, long lived.
- Reasonable life expectancy exceeding 10,000 hours.
- Fast acceleration. Instant stop.
- Our staff filters all incoming orders to insure adequate motor torque.

## Switches (All switches are UL and CSA approved)

### V1 – 10 Amperes

- UL rated 10 amperes nominal @ .75 power factor.
- ½ horsepower at 125/250 VAC.
- Enclosed, snap-action, sub-basic size.
- .187 male push-on terminals.
- Form C – SPDT.

### W2 – 15 Amperes

- UL rated 15 amperes nominal @ .75 power factor.
- ½ horsepower at 125/250 VAC.
- Enclosed, snap-action, sub-basic size.
- .250 Male push-on terminals.
- Form C – SPDT.

### H2 – 21 Amperes

- UL rated 21 amperes nominal @250VAC.
- 1hp @ 125 VAC, 2hp @ 250VAC.
- Enclosed, snap-action, sub-basic size.
- .250 male push-on terminals.

## Life Expectancy

The life of a switch is a function of the type, magnitude, and number of usages under an applied electrical load. At low electrical load 95% survival is expected at 10,000,000 operations, at full electrical load 95% survival is expected at 150,000 operations, subject to inrush considerations and type of load as to resistive, inductive, or capacitive. Particular attention should be given for high inrush applications such as heaters or lamps as might weld, erode, or cavitate switch contacts. We will gladly assist customers in making a selection.

Camshaft Speed (Time per Cycle)	No. of Switch Operations in One Year	
	Continuous Operation	Fifty 40-hour Weeks
1 sec.	31,557,600	7,200,000
15 sec.	2,103,840	480,000
30 sec.	1,051,920	240,000
1 min.	525,960	120,000
15 min.	35,064	8,000
30 min.	17,532	4,000
1 hr.	8,766	2,000
15 hrs.	584	133
30 hrs.	292	67

## AMERICAN CONTROL PRODUCTS

A DIV. OF PRECISION TIMER CO., INC.  
47 WESTBROOK INDUSTRIAL PARK ROAD  
WESTBROOK, CT. 06498

PHONE: (860)399-6253

FAX: (860)399-5619

EMAIL: info@precisiontimer.com  
WEB SITE: www.precisiontimer.com

## TECHNICAL BULLETIN

### PANEL MOUNTED INTERVAL TIMERS

PAGE 4  
OF 4

DATE  
5/27/03

**DPB**

REV