



SOLID STATE 10 AMP RATED PLUG IN TIMER

Series 631 – ON DELAY

CMOS DIGITAL CIRCUITRY

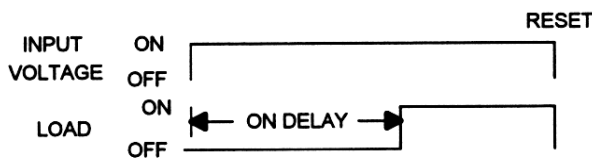
UL US
E98340

SP
LR46938

- Dust Cover Protection
- Tamper Resistant
- No False Operate
- SPDT & DPDT Relay Output
- Reverse Polarity Protection on DC
- Lightweight – 4 oz.
- Compact Size
- Transient Protected to 6000V

Application of input voltage starts timing. The normally open relay contacts will close at the end of the preset delay time and will remain closed until the input voltage is removed. At reset the normally closed contacts will re-close and a new cycle can begin. Available in the standard voltages and times as shown below.

TIMING DIAGRAM



SPECIFICATIONS

1. Repeat Accuracy: $\pm 0.25\%$
2. Combined Effect of Temperature and Voltage upon Repeat Accuracy: $\pm 2\%$ of Setting
3. Reset Time: 150 ms.
4. Operating Voltage Tolerance: $\pm 20\%$
5. Load Current: 10 Amps Resistive at 120 / 240VAC or 28VDC
6. Dielectric Strength: 1500 VRMS
7. Insulation Resistance: 100 Megohms Min.
8. Input Transient Protection: 3000V 120V UNITS, 6000V 240V UNITS
9. Temperature Ambients: Operating -40°C to $+70^{\circ}\text{C}$ Storage -55°C to $+70^{\circ}\text{C}$
10. Humidity-Operating: 95% Relative
11. Linearity(Control K): $\pm 5\%$ Minimum from 10% to 90% of range
12. Timing Tolerance: $\pm 9\%$ + Tolerance of Rt Std., $\pm 5\%$ Special (Fixed)

HOW TO ORDER: 631-(T)(V)(C)/(P)R(H)

SERIES	(T) = TIME RANGE	(V)=VOLTAGE	(C)=CONTROL	(P)=POLES	(H) = HEADER
631	P = 0.1 - 5 SEC.	1 = 12VDC	F = FIXED	1 = SPDT	08 = 8 PIN
	1 = 0.1 - 10 SEC.	2 = 24VDC	E = EXTERNAL	2 = DPDT	11 = 11 PIN
	L = 0.2 - 20 SEC.	3 = 48VDC	K = KNOB	3 = 3PDT	
	J = 0.3 - 30 SEC.	4 = 24VAC			
	M = 0.6 - 60 SEC.	5 = 120VAC			
	2 = 1 - 100 SEC.	6 = 240VAC			
	K = 1.2 - 120 SEC.	7 = 110VDC			
	F = 2 - 180 SEC.				
	E = 3 - 300 SEC.				
	3 = 10 - 1000 SEC.				
	4 = 0.1 - 10 MIN.				
	G = 0.3 - 30 MIN.				
	H = 0.6 - 60 MIN.				
5 = 1 - 100 MIN.					
V = 3 - 300 MIN.					
6 = 10 - 1000 MIN.					
D = 1 - 24 HRS.					

FOR FIXED TIME SPECIFY THE VALUE IN SECONDS, MINUTES, OR HOURS

MADE IN USA

EXAMPLE P/N: 631-24K/2R08 This is an ON DELAY, 10A Rated Timer with a Knob Adjustable 1-100 SECOND DELAY TIME. The INPUT VOLTAGE is 24 VAC. The output contacts are DPDT, and the Header is 8 PIN.

AMERICAN CONTROL PRODUCTS
A DIV. OF PRECISION TIMER CO., INC.
47 WESTBROOK INDUSTRIAL PARK ROAD
WESTBROOK, CT. 06498

PHONE: (860)399-6253
EMAIL: info@precisiontimer.com

FAX: (860)399-5619
Web Site: precisiontimer.com

TECHNICAL BULLETIN

SOLID STATE PLUG IN TIMER

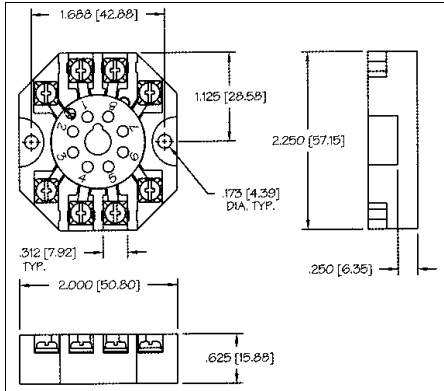
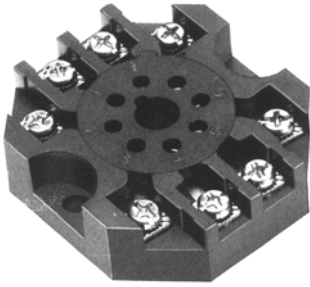
PAGE 1
OF 2

DATE
12-1-03

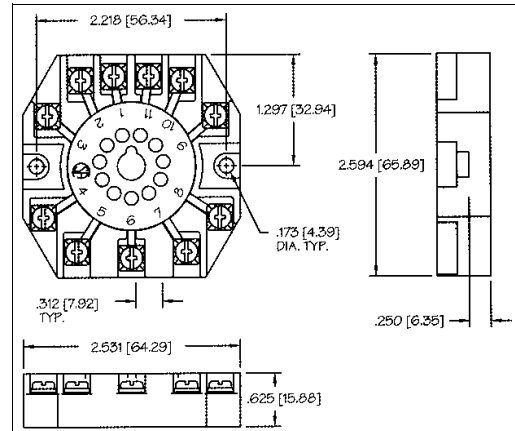
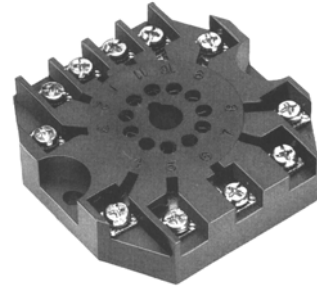
631

REV
B

ACCESSORY SOCKETS

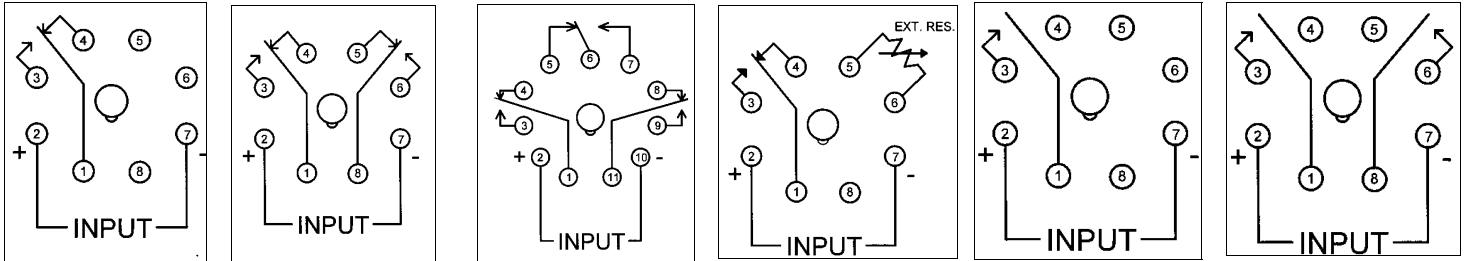


ORDER P/N BS8, 8 PIN SOCKET

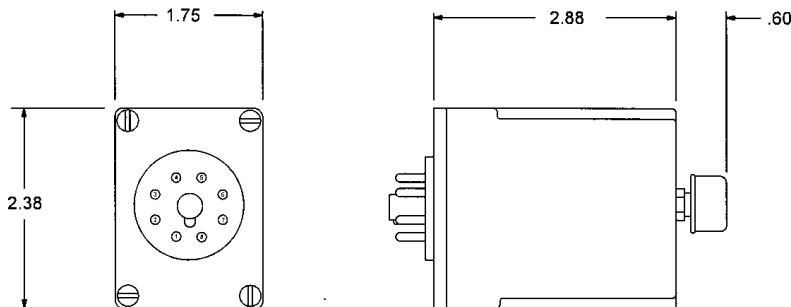


ORDER P/N BS11, 11 PIN SOCKET

STANDARD WIRING DIAGRAMS



OUTLINE DRAWING



MADE IN USA

AMERICAN CONTROL PRODUCTS
 A DIV. OF PRECISION TIMER CO., INC.
 47 WESTBROOK INDUSTRIAL PARK ROAD
 WESTBROOK, CT. 06498

PHONE: (860)399-6253
 EMAIL: info@precisiontimer.com

FAX: (860)399-5619
 Web Site: precisiontimer.com

TECHNICAL BULLETIN

SOLID STATE PLUG IN TIMER

PAGE 2
OF 2

DATE
12-1-03

631

REV
B