



# SOLID STATE 10 AMP RATED PLUG IN TIMING RELAY

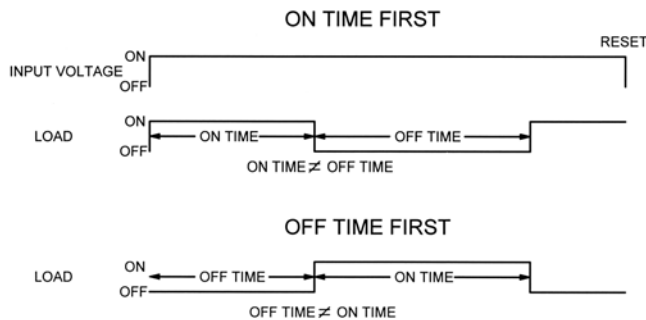
## Series 636 – PROGRAMMABLE RECYCLE CMOS DIGITAL CIRCUITRY

**UL** US  
E98340  
**SP**  
LR46938

- Dust Cover Protection
- Tamper Resistant
- No False Operate
- SPDT & DPDT Relay Output
- Reverse Polarity Protection on DC
- Lightweight – 4 oz.
- Compact Size
- Transient Protected to 6000V

Application of input voltage starts timing and turns the load ON. The load remains ON for the preset ON time and then turns OFF and remains OFF for the preset OFF time. Cycling ON/OFF will continue until power is removed. The ON & OFF times are independently adjustable. Interruption of the input voltage resets the time to T = 0. The unit is available with the OFF time period first, see below.

### TIMING DIAGRAM



### SPECIFICATIONS

1. Repeat Accuracy:  $\pm 0.25\%$
2. Combined Effect of Temperature and Voltage upon Repeat Accuracy:  $\pm 2\%$  of Setting
3. Reset Time: 150 ms.
4. Operating Voltage Tolerance:  $\pm 20\%$
5. Load Current: 10 Amps Resistive at 120 / 240VAC or 28VDC
6. Dielectric Strength: 1500 VRMS
7. Insulation Resistance: 100 Megohms Min.
8. Input Transient Protection: 3000V 120V UNITS, 6000V 240V UNITS
9. Temperature Ambients: Operating  $-40^{\circ}\text{C}$  to  $+70^{\circ}\text{C}$  Storage  $-55^{\circ}\text{C}$  to  $+70^{\circ}\text{C}$
10. Humidity-Operating: 95% Relative
11. Linearity (CONTROL K):  $\pm 5\%$  Minimum from 10% to 90% of range
12. Timing Tolerance:  $\pm 9\%$  + Tolerance of RE Std.,  $\pm 5\%$  Special (Fixed)

### HOW TO ORDER: 636-OR 636R (T1) (T2) (V) (C1) (C2) / (P) R (H)

| SERIES  | (T1) = ON TIME   | (T2) = OFF TIME  | (V)  | (C1)=CONTROL ON                       | (C2)=CONTROL OFF                      | (P)=POLES                        | (H) = HEADER  |
|---|--|--|--|---------------------------------------|---------------------------------------|----------------------------------|---|
| <b>636</b><br>ON FIRST  | P = 0.1 - 5 SEC.<br>1 = 0.1 - 10 SEC.<br>L = 0.2 - 20 SEC.<br>J = 0.3 - 30 SEC.<br>M = 0.6 - 60 SEC.   | P = 0.1 - 5 SEC.<br>1 = 0.1 - 10 SEC.<br>L = 0.2 - 20 SEC.<br>J = 0.3 - 30 SEC.<br>M = 0.6 - 60 SEC.   | 1 = 12VDC<br>2 = 24VDC<br>3 = 48VDC<br>4 = 24VAC<br>5 = 120VAC<br>6 = 240VAC<br>7 = 110VDC | F = FIXED<br>E = EXTERNAL<br>K = KNOB | F = FIXED<br>E = EXTERNAL<br>K = KNOB | 1 = SPDT<br>2 = DPDT<br>3 = 3PDT | 08 = 8 PIN<br>11 = 11 PIN   |
| <b>636R</b><br>OFF FIRST  | 2 = 1 - 100 SEC.<br>K = 1.2 - 120 SEC.<br>F = 2 - 180 SEC.<br>E = 3 - 300 SEC.<br>3 = 10 - 1000 SEC.<br>4 = 0.1 - 10 MIN.<br>G = 0.3 - 30 MIN.<br>H = 0.6 - 60 MIN.<br>5 = 1 - 100 MIN.<br>V = 3 - 300 MIN.<br>6 = 10 - 1000 MIN.<br>D = 1 - 24 HRS. | 2 = 1 - 100 SEC.<br>K = 1.2 - 120 SEC.<br>F = 2 - 180 SEC.<br>E = 3 - 300 SEC.<br>3 = 10 - 1000 SEC.<br>4 = 0.1 - 10 MIN.<br>G = 0.3 - 30 MIN.<br>H = 0.6 - 60 MIN.<br>5 = 1 - 100 MIN.<br>V = 3 - 300 MIN.<br>6 = 10 - 1000 MIN.<br>D = 1 - 24 HRS. |  |                                       |                                       |                                  |   |
| <div style="border: 1px solid black; padding: 5px; display: inline-block;">           FOR FIXED TIME SPECIFY THE VALUE IN SECONDS MINUTES OR HOURS         </div> |  |  |  |                                       |                                       |                                  | <div style="border: 1px solid black; padding: 5px; display: inline-block;"> <b>MADE IN USA</b> </div> |

EXAMPLE P/N: 636-135KK/2R08 This is a PROGRAMMABLE RECYCLE 10A Rated Timer with a Knob Adjustable .1-10 SECOND ON TIME and a 10-1000 SECOND Knob Adjustable OFF TIME. The INPUT VOLTAGE is 120 VAC. The output contacts are DPDT, and the Header is 8 PIN.

**AMERICAN CONTROL PRODUCTS**  
A DIV. OF PRECISION TIMER CO., INC.  
47 WESTBROOK INDUSTRIAL PARK ROAD  
WESTBROOK, CT. 06498

PHONE: (860)399-6253  
EMAIL: info@precisiontimer.com

FAX: (860)399-5619  
Web Site: precisiontimer.com

### TECHNICAL BULLETIN

### SOLID STATE PLUG IN TIMER

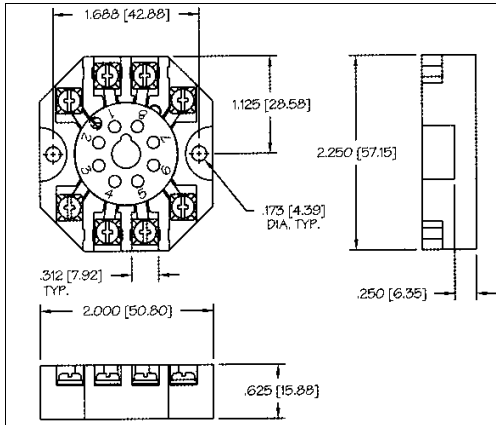
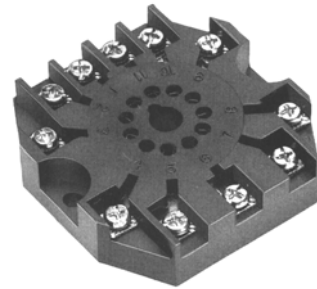
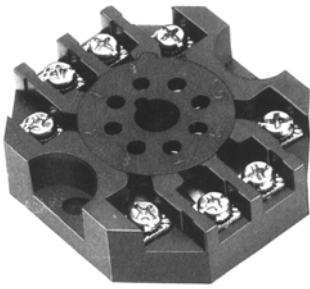
PAGE 1  
OF 2

DATE  
12-1-03

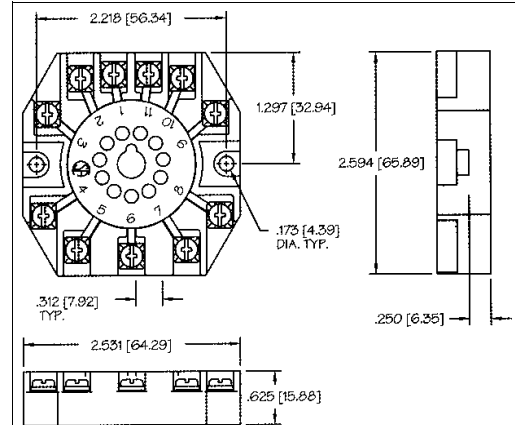
**636**

REV  
B

## ACCESSORY SOCKETS

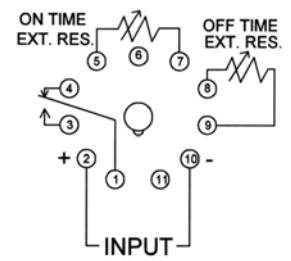
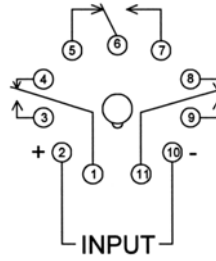
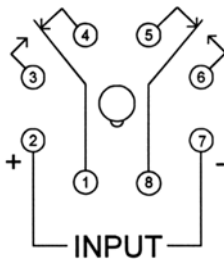
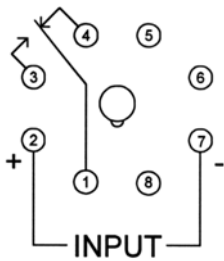


ORDER P/N BS8, 8 PIN SOCKET

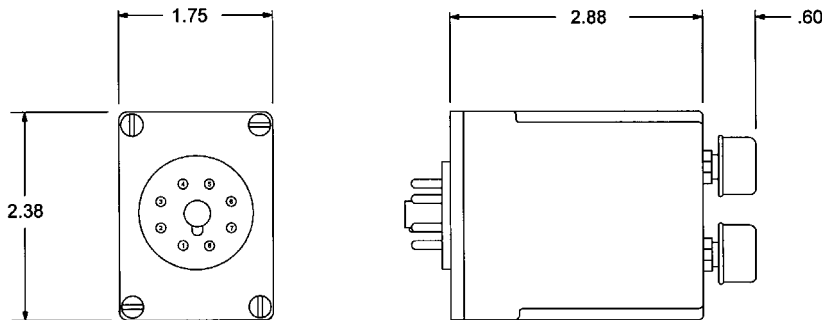


ORDER P/N BS11, 11 PIN SOCKET

## STANDARD WIRING DIAGRAMS



## OUTLINE DRAWING



**MADE IN USA**

**AMERICAN CONTROL PRODUCTS**  
 A DIV. OF PRECISION TIMER CO., INC.  
 47 WESTBROOK INDUSTRIAL PARK ROAD  
 WESTBROOK, CT. 06498

PHONE: (860)399-6253  
 EMAIL: info@precisiontimer.com

FAX: (860)399-5619  
 Web Site: precisiontimer.com

**TECHNICAL BULLETIN**

**SOLID STATE TIMING MODULE**

**PAGE 2**  
**OF 2**

**DATE**  
**12-1-03**

**636**

**REV**  
**B**