



# HIGH CURRENT TIMING RELAY

SOLID STATE                      ENCAPSULATED MODULE

E98340                      LR46938

## 10 AMPERE RATING 1/3 HP

### Series 846B – PROGRAMMABLE RECYCLE

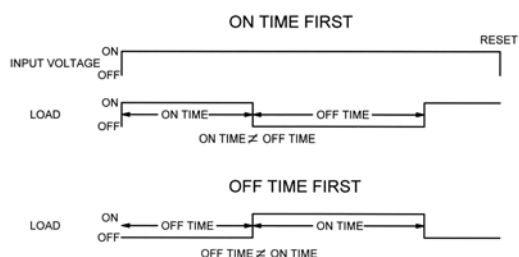
CMOS DIGITAL CIRCUITRY

- Environment Protected
- Tamper Proof
- No False Operate
- SPDT Relay Output
- Small Size – 2" x 3" x 1.35"
- Lightweight – approximately 2.5 oz.
- Rugged
- Transient Protected to 6000V

Application of input voltage starts timing and turns the load ON. The load remains ON for the preset time and then turns OFF and remains OFF for the preset OFF time. Cycling ON/OFF will continue until power is removed. The ON & OFF times are independently adjustable. Interruption of the input voltage resets the time to T = 0. This unit is available with OFF time period first, see below.

Control the timing of high power electric heaters, FHP motors, lamps, transformers and other high current loads rated less than 10 amps Resistive. CMOS digital circuitry is combined with high current output relay contacts. P/C board and internal components are encapsulated in a flame retardant molded housing, fitted with quick connect wiring terminals. Available in all standard voltages AC and DC. Fixed or adjustable timing from .1 seconds to 24 hours.

### TIMING DIAGRAM



### SPECIFICATIONS

1. Repeat Accuracy: ± 0.25%
2. Combined Effect of Temperature and Voltage upon Repeat Accuracy: ±2% of Setting
3. Reset Time: 150 ms.
4. Operating Voltage Tolerance: ± 20%
5. Load Current: 15 Amps Resistive at 120VAC
6. Dielectric Strength: 1500 VRMS
7. Insulation Resistance: 100 Megohms Min.
8. Input Transient Protection: 3000V 120V UNITS
9. Temperature Ambients: Operating -40°C to +70°C Storage -55°C to +85°C
10. Humidity-Operating: 95% Relative
11. Linearity (Option A or D): ±5% Minimum from 10% 90% of Range
12. Timing Tolerance: ±9% + Tolerance of Rt Std., ±5% Special (Fixed)

### HOW TO ORDER

846B – (T1) (T2) (V) (P1) (P2)  
846BR (T1) (T2) (V) (P1) (P2)

SERIES	(T1) = ON TIME RANGE	(T2) = OFF TIME RANGE	(V)=VOLTAGE	(P1) = ON TIME OPTIONS, (P2) = OFF TIME OPTIONS
<b>846B</b> ON FIRST  <b>846BR</b> OFF FIRST	P = 0.1 - 5 SEC. 1 = 0.1 - 10 SEC. L = 0.2 - 20 SEC. J = 0.3 - 30 SEC. M = 0.6 - 60 SEC. 2 = 10 - 100 SEC. K = 12 - 120 SEC. F = 20 - 180 SEC. E = 30 - 300 SEC.	P = 0.1 - 5 SEC. 1 = 0.1 - 10 SEC. L = 0.2 - 20 SEC. J = 0.3 - 30 SEC. M = 6 - 60 SEC. 2 = 10 - 100 SEC. K = 12 - 120 SEC. F = 20 - 180 SEC. E = 30 - 300 SEC.	1 = 12VDC 2 = 24VDC 3 = 48VDC 4 = 24VAC 5 = 120VAC 6 = 230VAC 7 = 110VDC	O - CUSTOMER SUPPLIES OWN POTENTIOMETER OR RESISTOR A - POTENTIOMETER SUPPLIED AS LOOSE PART *B - EXTERMNALLY INSTALLED RESISTOR *C - FACTORY FIXED INTERNAL D - TRIMMER POTENTIOMETER INSTALLED ON TERMINALS R - INTERNAL POTENTIOMETER WITH THRU SHAFT S - INTERNAL POTENTIOMETER WITH SCREWDRIVER SLOT
	<div style="border: 1px solid black; padding: 5px; display: inline-block;"> <i>* For Fixed Time Specify The Value In Seconds, Minutes, Or Hours</i> </div>			

EXAMPLE P/N: 846B-455RR This is a PLUG-IN RECYCLE 10A Rated Timer with an adjustable .1-10 MINUTE ON TIME and a 1-100 MINUTE adjustable OFF TIME. The INPUT VOLTAGE is 120 VAC. The internal time adjust potentiometers have thru shafts.

**AMERICAN CONTROL PRODUCTS**  
 A DIV. OF PRECISION TIMER CO., INC.  
 47 WESTBROOK INDUSTRIAL PARK ROAD  
 WESTBROOK, CT. 06498

PHONE: (860)399-6253  
 EMAIL: info@precisiontimer.com

FAX: (860)399-5619  
 Web Site: precisiontimer.com

### TECHNICAL BULLETIN

### SOLID STATE TIMING MODULE

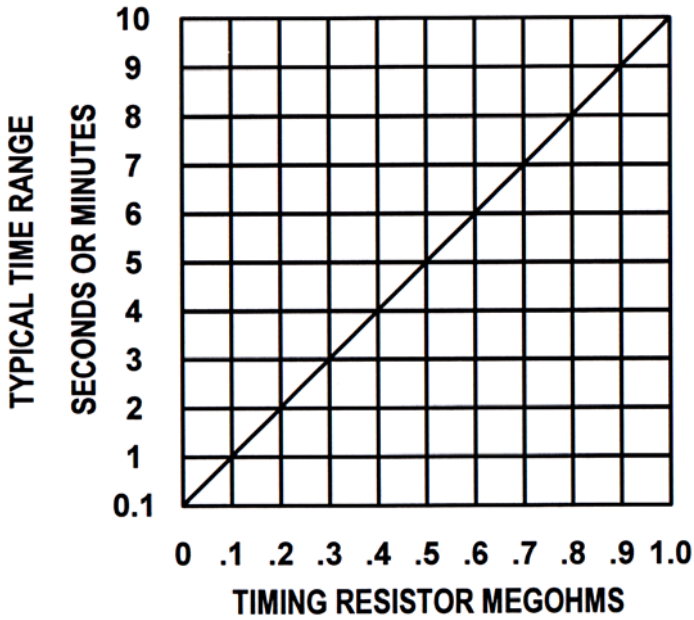
PAGE 1  
OF 2

DATE  
6-4-01

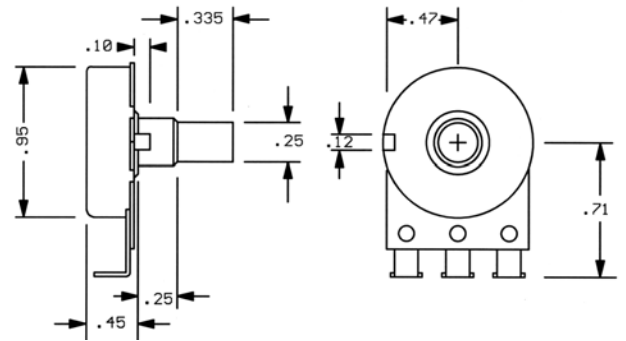
**846B**

REV

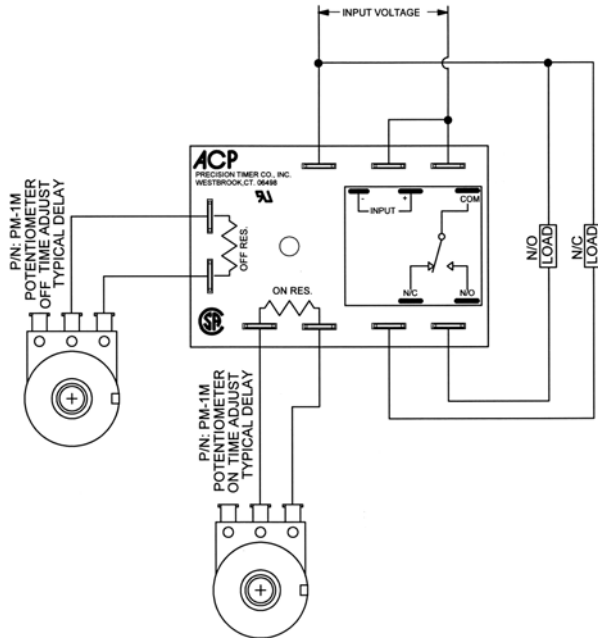
### TYPICAL CALIBRATION RESISTANCE VS TIME



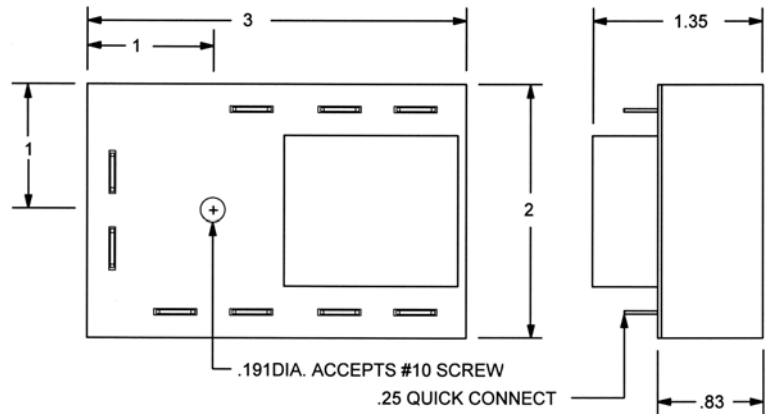
**ACCESSORIES AVAILABLE FROM STOCK**  
**CONTROL POTENTIOMETERS (OPTION A)**  
**ORDER P/N PM-1M 1 MEGOHM ± 20%**



### TYPICAL WIRING



### OUTLINE DRAWING



**MADE IN USA**

**AMERICAN CONTROL PRODUCTS**  
 A DIV. OF PRECISION TIMER CO., INC.  
 47 WESTBROOK INDUSTRIAL PARK ROAD  
 WESTBROOK, CT. 06498

PHONE: (860)399-6253  
 E-MAIL: info@precisiontimer.com

FAX: (860)399-5619  
 Web Site: precisiontimer.com

### TECHNICAL BULLETIN

### SOLID STATE TIMING MODULE

PAGE 2  
 OF 2

DATE  
 6-4-01

**846B**

REV  
 B